



2022 Annual Report

SUPPORTING THOSE IMPACTED BY
DOMESTIC VIOLENCE AND CHILD ABUSE

Dear Friend,

This year, our community began to emerge from the immediate threats of COVID. And yet, Journey, along with our entire region, continues to experience the challenges facing our society today... staffing shortages, prolonged effects of COVID, economic uncertainty, increased violence, record inflation, and inconsistent funding.

Despite these difficulties, Journey continues to be there for women, children, and men impacted by domestic violence and child abuse. More than 13,000 victims and survivors sought help last year, finding safety and healing from the most comprehensive domestic violence agency in northeast Ohio. Our unique approach of addressing both domestic violence and child abuse helps to break the cycle of violence.

Your donations led to several successes, including:

The Domestic Violence Housing First Initiative (DVHFI) made it possible for 113 families to bypass Shelter altogether and move directly into secure, independent housing. Case management is provided to rapidly assist in escaping abuse and living a life free of violence.

Journey enhanced community based victim advocacy in response to the pandemic and to address equity and inclusion, reaching victims where they are with Advocates who are not affiliated with a court. This approach has been so successful we are seeking funding to expand the number of community based advocates.

In order to mitigate the spread of COVID, Journey had to reduce the number of victims in Shelter at any given time. To continue meeting the need, support from partners and the community allowed us to leverage hotels and expedited permanent housing.

83 new clients sought help from Journey's Trauma Services program - the only program in Cuyahoga County that provides short- and long-term trauma-informed therapy to victims, ages 4 through adulthood, who have experienced or witnessed domestic violence and/or child abuse.

Justice System Advocates supported 1,782 clients through the court process. Having an Advocate is critical for victims to understand the court process, their rights, their options, and to connect to the resources they will need to rebuild their lives free from abuse.

Without you, survivors of domestic violence and child abuse would not receive critical services like these. Your continued and generous donations provide hope and healing to those experiencing domestic violence and/or child abuse. Funding helps adults and children in danger find a safe haven and provides ongoing assistance and resources.

Thank you for walking this path with us. Your support tells survivors they are not alone on their Journey to health and safety.

In Peace and Service,

A handwritten signature in blue ink that reads "Melissa Graves".

Melissa Graves, Chief Executive Officer



DID YOU KNOW?

There were **112** fatalities in Ohio due to domestic violence last year.

On just one day in September 2021 **1,548** adult and child victims of domestic violence sought shelter in Ohio's emergency domestic violence shelters or transitional housing programs.

Journey's mission is to provide services that foster safety and healing for those affected by child abuse and domestic violence; and to prevent abuse through education, advocacy, and systemic change.

A Look Back at 2022



5,899 interventions through our 24-Hour Helpline



301 clients served in our Emergency Domestic Violence Shelter



1,782 victims of intimate partner violence supported through the judicial process



83 victims healing through individual therapy, art therapy, and support group sessions



680 supervised visits and safe exchanges for children of separated parents



17,385 people educated about family violence and healthy relationships

216.391.4357 (HELP)
Journeyneo.org



**These numbers represent services received in fiscal year 2022

Journey welcomed Tameka Huey-Barkley, PCC-S, LMT as the Director of Prevention and Trauma Services and Sheryl Thomas-Washburn, MA, CDP as the Chief Program Officer.

Journey is excited for the expertise Tameka and Sheryl bring to the organization and their dedication to the mission of the agency.

Visit Journeyneo.org for information and resources.



Services

24 - Hour Helpline and Emergency Domestic Violence Shelter

Operating in the same confidential location for nearly 50 years, the shelter operates as a safe haven for survivors and their children actively fleeing their perpetrators. Advocates provide clients with comprehensive case management, support, and group programming with a focus on safety and addressing barriers to obtaining housing away from their abuser. Advocates assist help seekers on the Helpline with crisis intervention, safety and escape planning, connections to resources and referrals, education on the justice system and intakes for services. The Helpline receives crisis-based and referral and information calls, texts, and live messages 24 hours a day/7 days a week. [The Domestic Violence Housing First Initiative \(DVHFI\)](#) connects survivors and their children to independent housing so they may remain safe without entering shelter. Case management is provided to survivors to rapidly assist in escaping abuse and living a life free of violence.

Justice System Advocacy

Journey provides community based advocacy for domestic violence victims involved in criminal and civil proceedings throughout Cuyahoga County. Advocates offer crisis intervention, safety planning and education, and connections to community supports; they also facilitate support groups that help with the healing process.

[Advocates also provide services at Canopy Child Advocacy Center to families with children under the age of 12 who have been impacted by sexual abuse.](#)

Safe & Sound Supervised Visitation Center

Safe & Sound Supervised Visitation Center (SSVC) is the only one of its kind in Cuyahoga County helping high-risk, high-conflict families in need of supervised visits and/or safe exchanges. The program meets a critical need in the community by increasing the safety of the child(ren) and the residential parent or guardian when domestic violence, mental health or substance abuse is an issue, or when other significant life challenges may put the child(ren) at risk. SSVC also serves families in neighboring counties.

Prevention and Community Education

[Professional Trainings:](#) Journey has diverse speakers with years of experience providing information and education, seminars, and professional trainings to schools, human service agencies, medical professionals, law enforcement, and interested community groups.

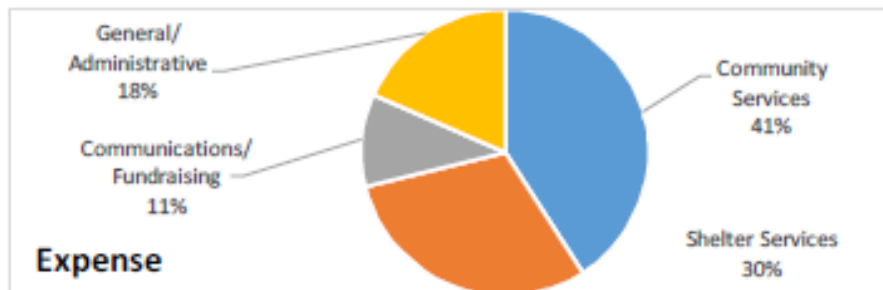
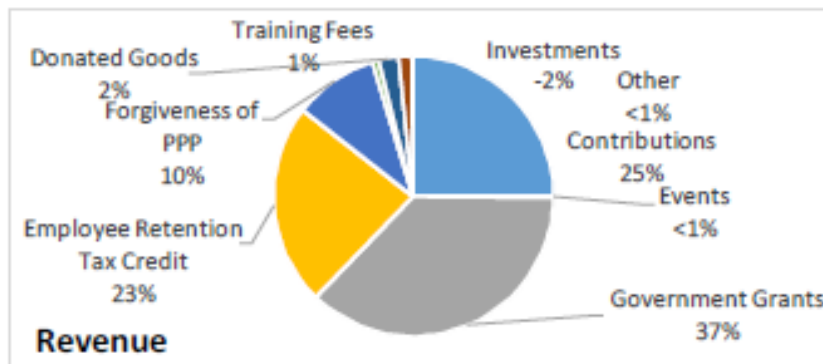
[Latina Domestic Violence Project:](#) Offers culturally relevant advocacy and support services for Latino victims of domestic violence. All Advocates are bilingual in Spanish.

[Education Group:](#) This 7-week program provides education on the dynamics of domestic violence to help those affected by abuse make informed life decisions.

Trauma Services

Therapy services for children, adolescents and adults who have experienced trauma, grief, and loss related to child abuse, teen dating violence, domestic violence and/or stalking. Therapists are skilled and trained in trauma focused therapy models like Eye Movement Desensitization and Reprocessing (EMDR) and Trauma Focused Cognitive Behavioral Therapy (TF-CBT). Services include individual and group therapy for both children and adults.

July 2021 – June 2022 Financials



Contributions	\$ 1,449,795
Events	\$ 15,938
Government Grants	\$ 2,142,222
Employee Retention	
Tax Credit	\$ 1,359,322
Forgiveness of PPP	\$ 566,000
Training Fees	\$ 38,738
Donated Goods	\$ 134,741
Investments	\$ (90,452)
Other	\$ 7,513
Total	\$ 5,623,817
Community Services	\$ 1,879,833
Shelter Services	\$ 1,388,207
Communications/ Fundraising	\$ 478,948
General/ Administrative	\$ 843,835
Total	\$ 4,590,823

Wondering how to support people experiencing abuse?

- Monetary donations
- Planned Giving
- Employer Matching Gift
- Workplace Giving
- Used Cellphones
- Gift Cards
- Inkind donations/items from Amazon Wishlist

For more information or to make a donation, scan the QR code
or visit journeyneo.org/donate



Board of Directors

Eric Logan (President)	Margarita Diaz	Eva Love, MD
Jejuana C. Brown (Vice President)	Michelle Fischer	Alison Magyari
Lauren Backus (Treasurer)	Brandon Griffin	Andrea Martemus-Peters
Kelly Woodard (Secretary)	Sally Ingberg	Catherine Matti
Jeffrey C. Sindelar, Jr. (Past President)	Dean Jenkins	Sonia Monroy Matis
Michael Anderton	Sean Kilcher	Arbinder Raina
Kellee Bacote	Melissa Kline	Amy Thompson
Susan Belman	Jim Lawler	